



Eberspächer high-pressure hydraulics

Tensioning equipment for cable-stayed bridges



Selection table

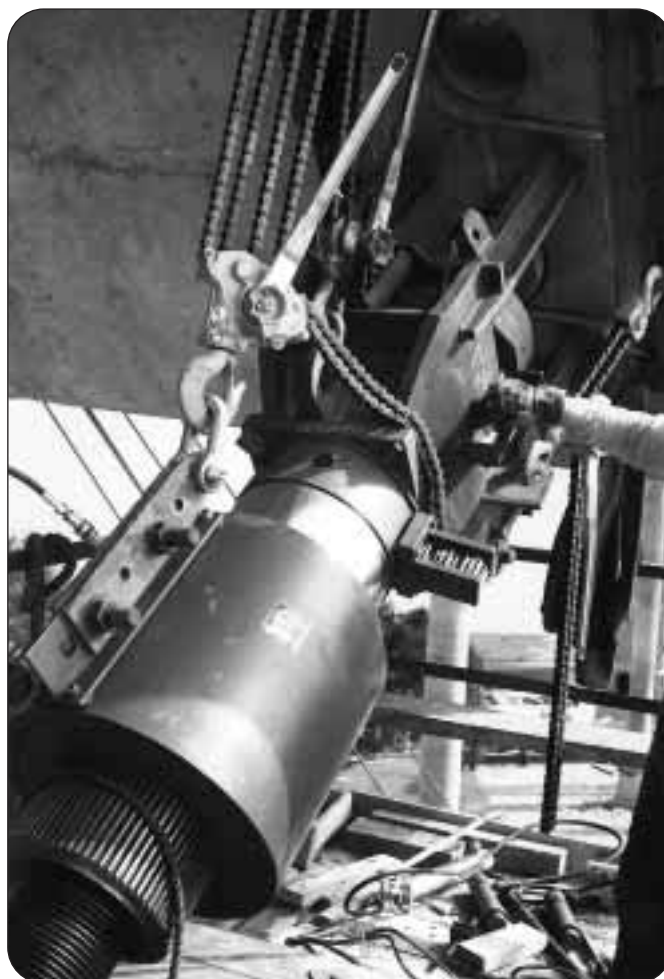
Type	SP1	SP24	SP9	SP11	SP26	SP27	SP77	SP23
Tensioning force kN	1600	2500	3150	5000	6300	7100	8000	10000
Cylinder Type	ZD 814	ZD 858	ZD 858	ZD 8034	ZD 882	ZD 8037	ZD 8171	ZD 869
Tensioning spindle	M 80	S 125	S 140	S 170	S 220	S 220	S 220	S 250

Description

The tensioning equipment is suitable for all tensioning distances. Main parts of the equipment are centre-hole cylinder, tensioning spindle, tensioning and drive chair, tensioning nut and supporting nut.

Function

The centre-hole cylinder is connected with an electro-hydraulic power pack with control valves. For tensioning of the angular cables the cylinder carries out several strokes which gives as a total the tensioning distance of the tensioning spindle. The load hereby is alternately taken by the tensioning nut or the supporting nut. The adjustment of the supporting nut is done by a so called ratched drive, normally manually or alternatively motor driven.



Eberspächer GmbH
high-pressure hydraulics

D-73219 Kirchheim/Teck · P. O. B. 1125 · Germany
Phone (07021) 95060-0 · Telefax (07021) 54575

SP 010e 11/95