

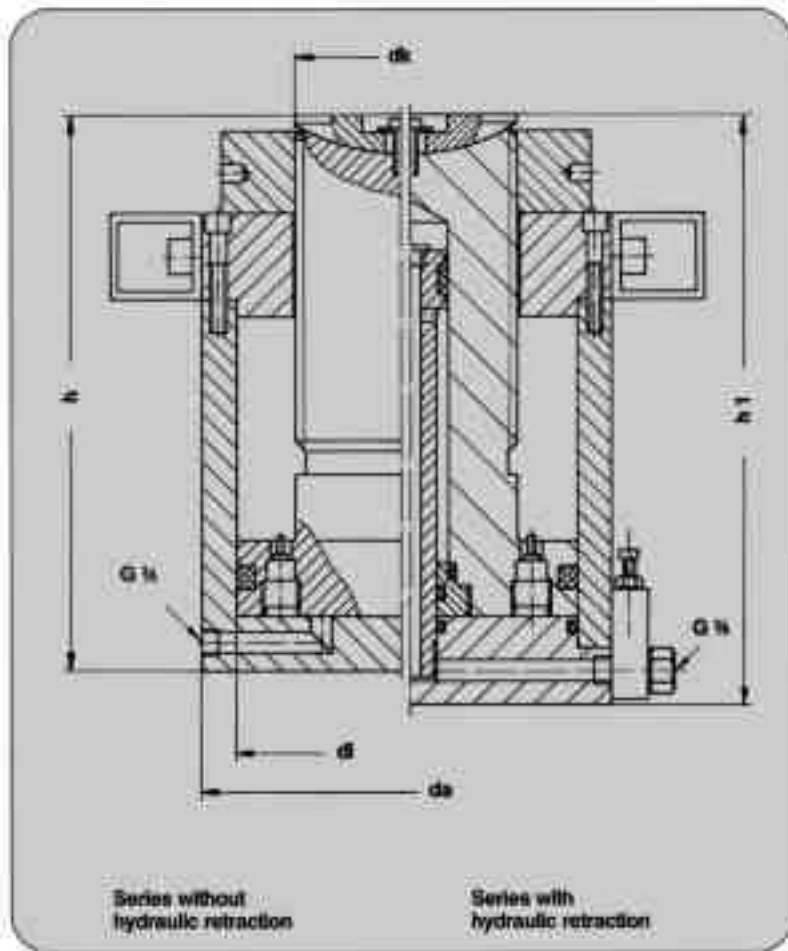
Eberspächer high-pressure hydraulics

Compact jacks with locking-ring



**630 bar
100 to 1000 t
160 mm stroke**

Compact jacks with locking-ring



630 bar
 Stroke 160 mm
 Spherical bearing plate floats $\pm 5\%$
 Permissible transverse force 8%

Compact-size series – low weight and attractive dimensions due to the use of hardened and tempered steel.

Guided ram with stroke stop. Special design permits greater transverse forces to be transmitted.

Dependent on the permissible compressive loads, provision will have to be made for compression distribution plates, as the case may be.

Hydraulic hand-operated units or hydroelectric units, distribution valves, tubes and pipes are available for driving the jacks.

Series without hydraulic retraction					Both series			Series with hydraulic retraction				
Type	Load t	A cm ²	h mm	G kg	di mm	da mm	dk mm	Type	load t	A 1 cm ²	h 2 mm	G 1 kg
ZE 7148	100	154	345	53	140	185	80	–	–	–	–	–
ZE 7149	160	254	365	85	180	221	110	ZE 7149.3	150	244	397	92
ZE 7150	200	314	372	109	200	246	125	ZE 7150.3	190	304	401	117
ZE 7151	240	380	377	138	220	270	140	ZE 7151.3	230	370	403	149
ZE 7152	310	491	399	190	250	307	180	ZE 7152.3	295	471	428	204
ZE 7153	390	616	410	240	280	338	200	ZE 7153.3	375	596	439	256
ZE 7154	500	804	432	349	320	393	220	ZE 7154.3	485	784	452	359
ZE 7155	640	1018	466	452	360	442	280	ZE 7155.3	625	998	484	470
ZE 7156	790	1257	484	623	400	490	320	ZE 7156.3	775	1237	496	637
ZE 7157	1000	1590	530	876	450	552	360	ZE 7157.3	985	1570	532	886



Eberspächer GmbH
 high-pressure hydraulics

D-73219 Kirchheim/Teck · P.O.B. 1125 · Germany
 Phone (07021) 95060-0 · Telefax (07021) 9506050 · www.eberspaecher.org